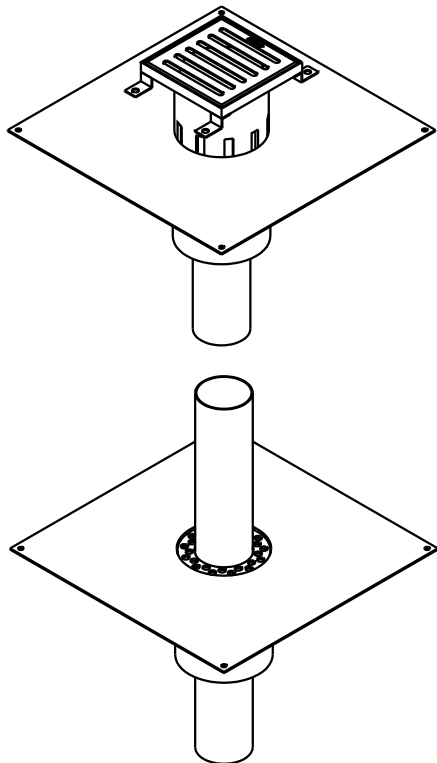
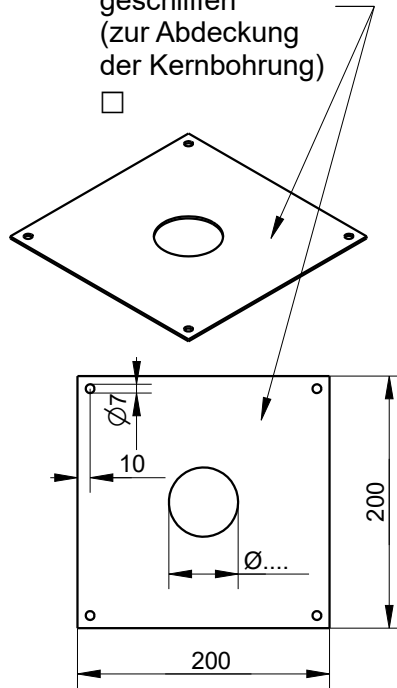


Resitec - Balkonwassereinlauf Typ RS 292K, spezial

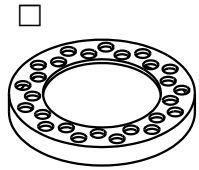
Massblatt / fiche technique des mesures



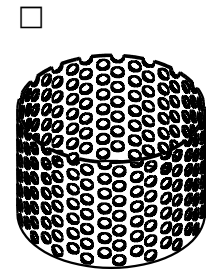
Abschlussblech
spezial für unten
an Decke 1.4301
geschliffen
(zur Abdeckung
der Kernbohrung)



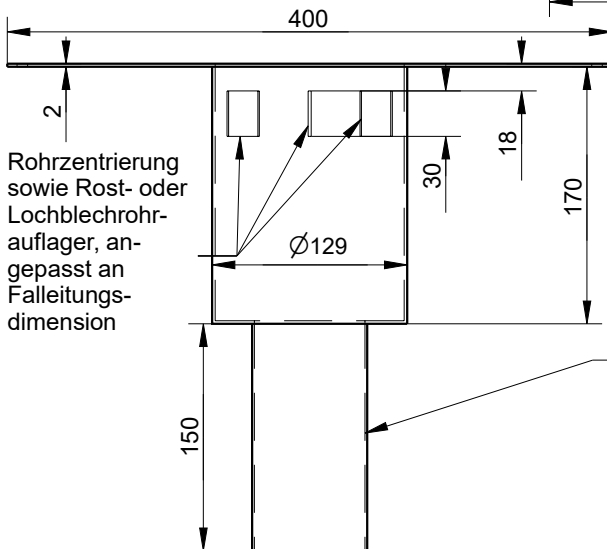
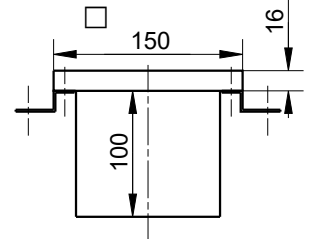
Lochrost
spezial



Lochblechrohr
RS589.129



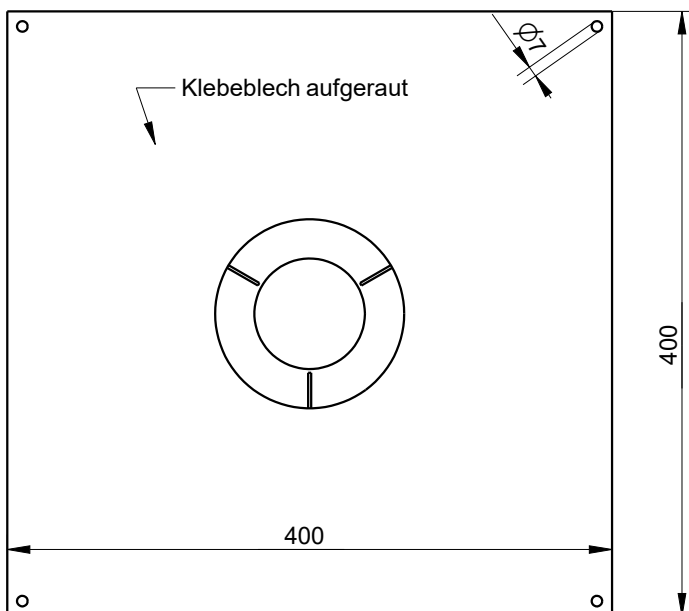
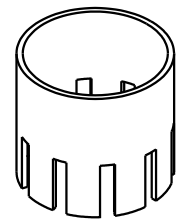
Oberteil
RS518.150



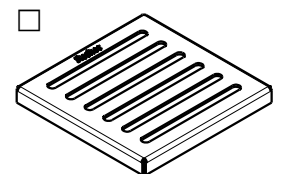
Pressrohr
angeschweisst

- ø 42 mm
- ø 54 mm
- ø76.1 mm
- ø88.9 mm

PE-Rohr ø 125
mit seitlichen
Schlitzen
(lieferung Installateur)



Schlitzrost 2 mm
RS511.2.145



Lochrost 3 mm
RS511.3.145

